

Diagnostic Solutions



Complete Diagnostic Solutions

A complete portfolio of Cardiac
diagnostic solutions to help support
sustained patient outcomes



Cordis Corporation Offers a Complete Portfolio of Diagnostic Solutions

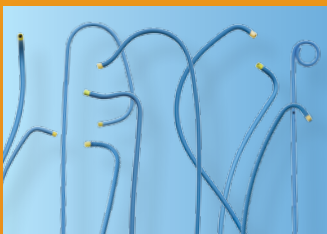
Since 1968, Cordis Corporation has been a leader in the market offering best-in-class diagnostic solutions. Over the past four decades, our product offering has grown to become one of the largest in the industry. With high performing solutions to help support sustained patient outcomes, Cordis has become the full-line partner of choice. A Cordis diagnostic catheter is used every three seconds in the U.S.



Diagnostic Guidewires



Sheath Introducers



Diagnostic Catheters

Diagnostic Guidewires

EMERALD™ Diagnostic Guidewires

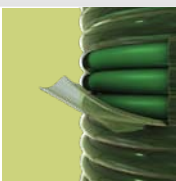
Intended for percutaneous entry and guidance of catheters, the EMERALD™ Diagnostic Guidewire complements our diagnostic catheter and catheter sheath introducer lines. Performance, endurance and safety are built into each EMERALD™ Guidewire with solid tensile strength to minimize the likelihood of stretching or fracturing. In the unlikely event this occurs, a safety ribbon is welded to both ends of the wire to help the wire remain intact.

Flexible Tip: Versatility



The variety of tip shapes and flexibilities satisfy a wide range of physician preferences.

Heparin Coating: Performance



Heparin coating enhances anticoagulability.

Product Highlights

- Enhanced maneuverability
- Reduced likelihood of flaking
- Finger straightenability
- Precise tolerances
- Proprietary PTFE coating process
- Available in multiple shapes and sizes
- Available separately or in ProPac which includes 3 diagnostic catheters, 1 sheath and 1 diagnostic guidewire

GUIDEWIRES

Guidewires

Sheath Introducers

AVANTI[®]+ Sheath Introducer

For use in arterial and venous procedures requiring percutaneous introduction of intravascular devices. The pioneer of catheter sheath introducer technology, the AVANTI[®]+ Sheath Introducer delivers patented valve technology, smooth transitions, monitoring capabilities and exceptional performance for your procedural success.

Hexacuspoid Design

This design provides a balance between catheter maneuverability and hemostasis.

Atraumatic Tip Transitions

Both the sheath and the vessel dilator are uniquely tapered and manicured. This results in smooth insertions and may help lessen tissue damage upon entry.

Kink-Resistant Cannula

The design integrates a soft, flexible inner layer with a stiffer outer layer for improved bendability and support. It is also less prone to kinking, cost-effective and reliable.

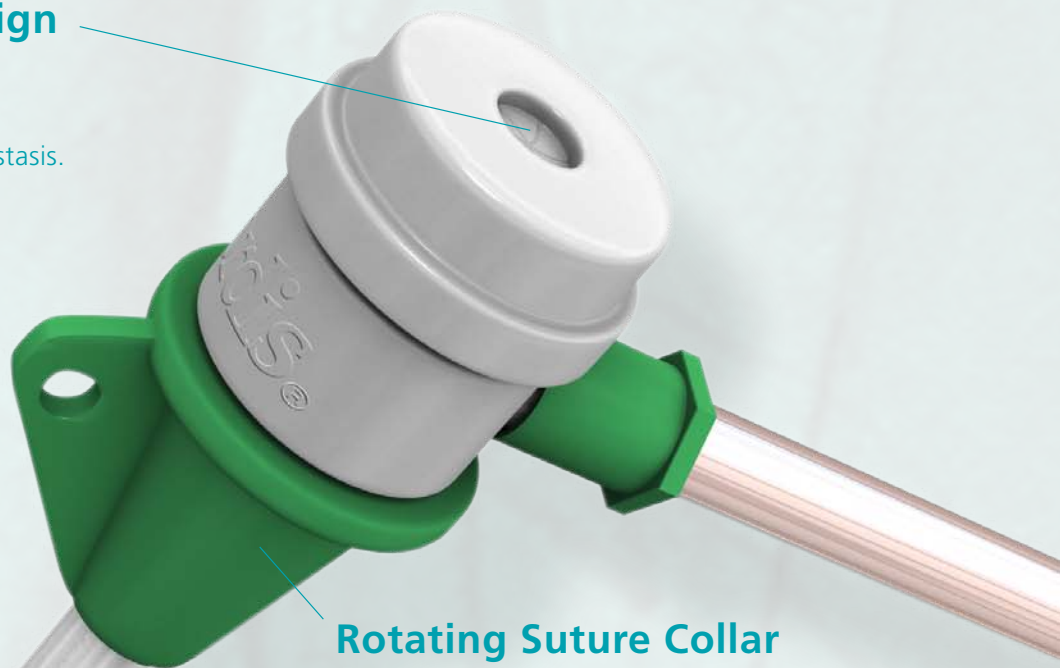
Rotating Suture Collar

This suture collar facilitates greater procedural flexibility. It stays in place better and allows for more patient movement.

Many Sizes to Fit Many Approaches

- 4F, 5F, 6F, 7F, 8F, 9F, 10F and 11F
- Sheaths for radial, brachial, and femoral approaches
- Custom shapes available from Modified Standard product offering

(See product code inserts for ordering information)

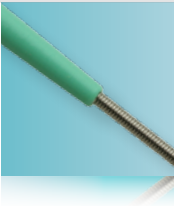




Patented SLIX Hexacuspid Valve

This feature allows for consistent and reliable valve hemostasis, a reduction in the amount of bleedback, and increased catheter maneuverability. As a result, procedures are easier for the doctor and beneficial for the patient.

Tapered Cannula: Atraumatic



Smooth transitions, combined with a lubricious cannula coating, reduce friction and result in smooth insertions.

Monitoring: Capabilities



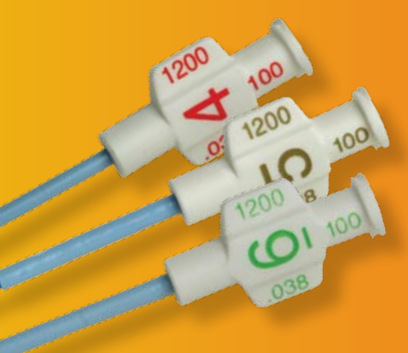
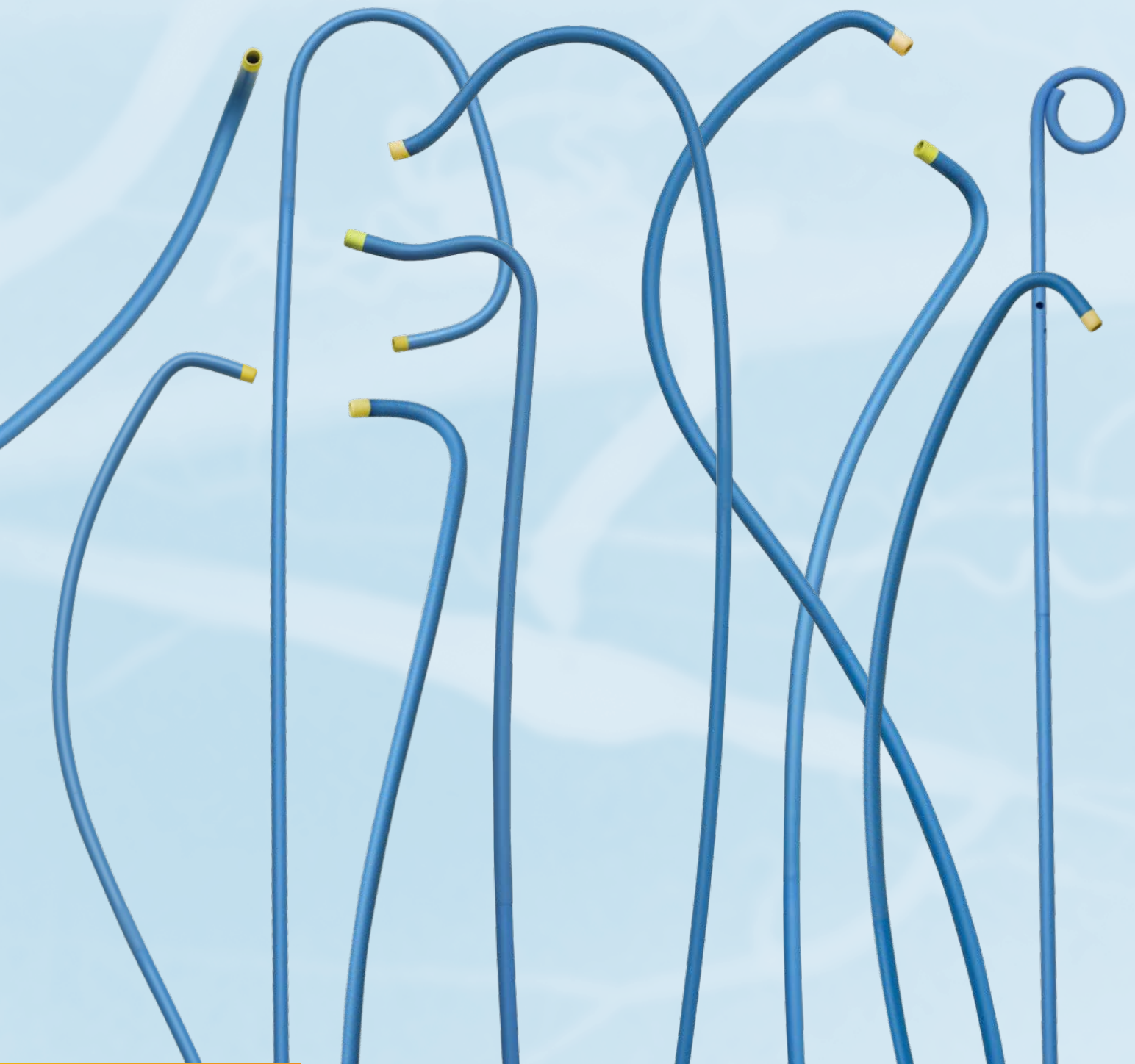
Monitoring sheath enables physician to perform pressure monitoring, measure ACTs or deliver medications without withdrawing the catheter.

Product Highlights

- Smooth insertion and withdrawal
- Excellent hemostasis and catheter maneuverability
- Easy-to-use rotating suture collar
- Monitoring sheath
- Excellent OD/ID ratio
- Broad product offering

Sheaths

Diagnostic Catheters

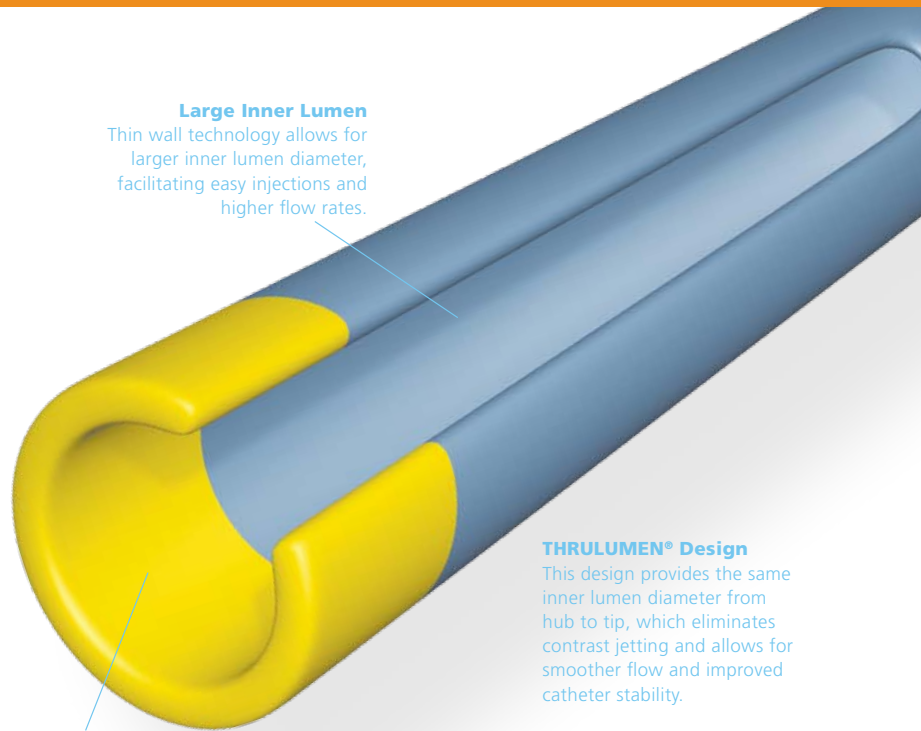


Color-coded Hub Feature for Easy Size Identification.

Facilitates catheter selection.

The Broadest Product Range Available

Cordis diagnostic catheters are the “gold standard” with state-of-the-art technology and 40 years of market leadership behind them. Only Cordis diagnostic catheters feature a radiopaque tip, proprietary Vestan™ Nylon and an extensive selection of shapes and sizes.

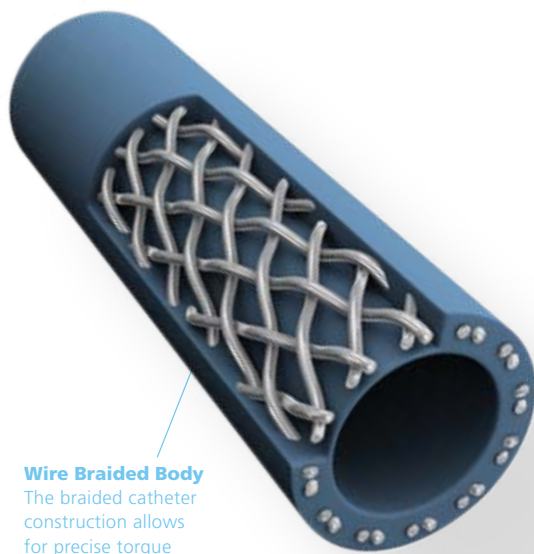


Large Inner Lumen

Thin wall technology allows for larger inner lumen diameter, facilitating easy injections and higher flow rates.

THRULUMEN® Design

This design provides the same inner lumen diameter from hub to tip, which eliminates contrast jetting and allows for smoother flow and improved catheter stability.



Wire Braided Body

The braided catheter construction allows for precise torque control and enhanced pushability.

Radiopaque Tip

The radiopaque tip improves visibility to help reduce the risk of vascular damage upon entering tortuous or fragile vessels.

Product Highlights

- Precise torque control
- Kink-resistant shaft
- Broadest offering:
 - 4 to 7 French
 - Nylon or polyurethane options
 - Many shapes
 - Availability of procedure packs

(See product code inserts for ordering information)

Catheters

SUPER TORQUE®

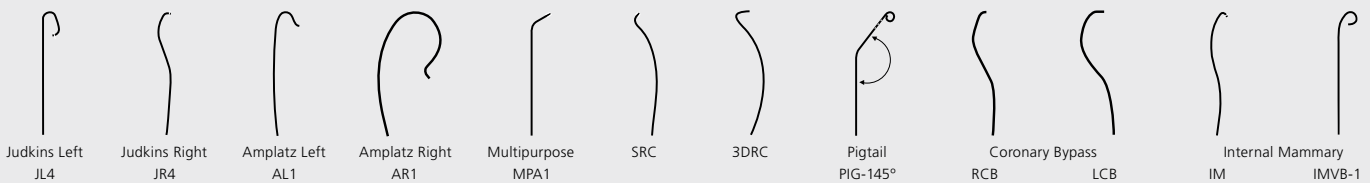
SUPER TORQUE® Plus

INFINITI®

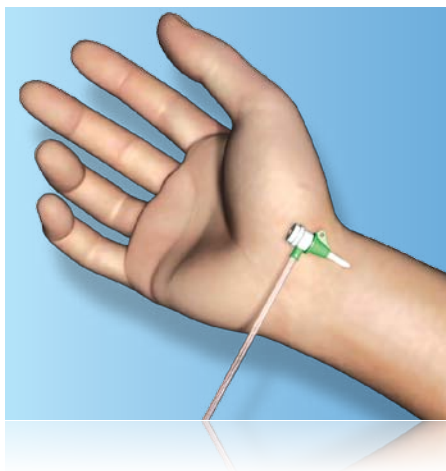
INFINITI®4

CATHETERS

Catheters Available in a wide range of sizes and configurations.



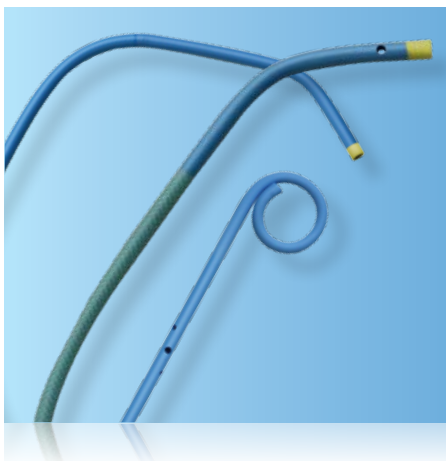
TransRadial Systems



Cordis offers a full range of products for transradial access, including diagnostic catheters, sheaths and guiding catheters specifically designed to access the radial artery.

The AVANTI®+ Sheath Introducer provides a coated cannula for atraumatic insertion, outstanding kink resistant cannula for easy insertion and removal of devices, and excellent hemostasis with patented SLIX hexacuspid valve. A longer taper on the vessel dilator allows for smooth insertion. Available for diagnostic and interventional transradial procedures with sizes ranging from 4F - 7F, all color-coded by French size for quick identification.

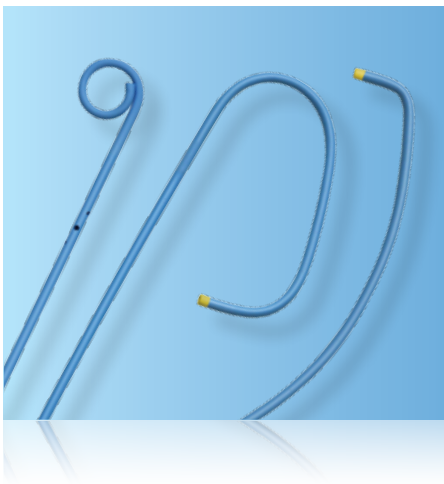
Modified Shapes



Many of Cordis' sheath and catheter products from our standard catalog can be modified to suit a clinician's specific needs. For example, catheters and sheaths can be made shorter or longer, catheter shapes can be modified, packs can be assembled. Custom shapes may also be available upon request. To review a full list of modified standard products, please contact your local Cordis Cardiology sales representative.

Packaged Solutions

Cordis diagnostic catheters, catheter sheath introducers and diagnostic wires are sold separately or in packs. Many product configurations are available in all three of the following pack types:

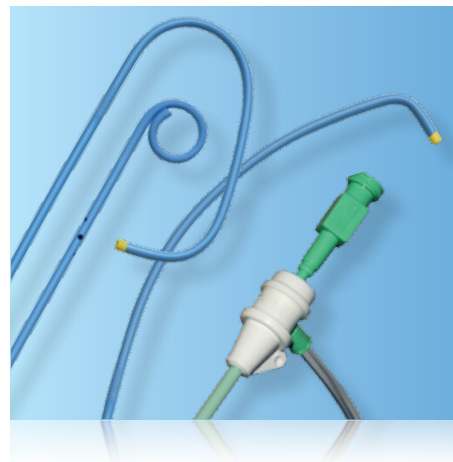


MultiPac

Each individual MultiPac includes three selective catheters; a right and left selective catheter and one ventricular pigtail catheter. Multipacs are sold 5 each in a box.

PrimoPac

Each individual PrimoPac includes a right and left selective catheter, one ventricular pigtail catheter and one catheter sheath introducer. PrimoPacs are sold 10 each in a box.



ProPac

A set of three selective catheters packaged together with a catheter sheath introducer and a diagnostic guidewire. Each individual ProPac includes a right and left selective catheter, one ventricular pigtail catheter, one catheter sheath introducer, and one diagnostic guidewire. Set of three catheters, sheath and diagnostic guidewire is sold 10 ProPacs to a box.



A Complete Line of Cardiology Products From the Name You Trust

Drug-eluting stents

CYPHER SELECT® PLUS Sirolimus-eluting Coronary Stent

Bare Metal Stents

Presillion™

Presillion™ Plus

Emboli protection device

ANGIOGUARD® RX Emboli Capture Guidewire System

Guiding catheters

Long VISTA BRITE TIP® Guiding Catheter

VISTA BRITE TIP® Guiding Catheter

Steerable guidewires

ATW® Guidewire

ATW®MW Guidewire

REFLEX® Steerable Guidewire

SHINOBI® PLUS Steerable Guidewire

SHINOBI® Steerable Guidewire

STABILIZER® Balance Performance Steerable Guidewire

STABILIZER®MW Steerable Guidewire

WIZDOM® Steerable Guidewire

Balloons

Dura Star® PTCA Dilation Catheter

Fire Star® PTCA Dilation Catheter

Catheter sheath introducers

AVANTI™+ Sheath Introducer

Diagnostic catheters

7F HIGH FLOW

INFINITI® Catheters

QUICK CARE 4F INFINITI® Catheters

SUPERTORQUE® Plus Catheters

Diagnostic guidewires

EMERALD™ Diagnostic Guidewire

Cordis[®]
a Johnson & Johnson company



Products

Providing a broad range of quality and innovative products to make a real difference in the minimally invasive treatment of cardiac and vascular disease.

Services

Supporting interventionalists and cathlab personnel by offering a full range of educational services through the Cordis Cardiac and Vascular Institute (CCVI).

Outcomes

Changing the lives of patients by being committed to evidence based medicine with the largest body of clinical evidence. This means maintaining an unwavering commitment to helping change the face of circulatory disease management. Today, tomorrow and into the future, we're devoted to our strong partnership with you, while consistently creating leading-edge products that will benefit the industry.



Important Information:

Prior to use, refer to the "instructions for use" supplied with these devices for indications, contraindications, side effects, suggested procedure, warnings and precautions. As part of the Cordis policy of continuous product development we reserve the right to change product specifications without prior notification.

Tel: +32 2 352 14 11 Fax: +32 2 352 15 90

© Cordis Europe, a division of Johnson & Johnson Medical N.V. - August 2010 - 2E-800-1956-1

Diagnostic Guidewires

EMERALD™ Fixed-Core Guidewires

- For percutaneous entry and guidance of angiographic catheters
- Units per Package: 5

PTFE-COATED STRAIGHT TIP

DIAMETER (inch)	LENGTH (cm)	FLEXIBLE END (cm)	J-RADIUS (mm)	CATALOGUE NUMBER
0.018	150	7		502-704
0.021	150	7		502-703
0.025	150	7		502-549
0.032	150	7		502-548
0.035	150	7		502-542
0.038	150	7		502-541

* with floppy tip (Bentson guidewire)

PTFE-COATED DOUBLE-ENDED

- 3 cm straight / 7 cm J-curve

DIAMETER (inch)	LENGTH (cm)	FLEXIBLE END (cm)	FLEXIBLE END - J-CURVE (cm)	J-RADIUS (mm)	CATALOGUE NUMBER
0.035	150	3	7	2	502-563

PTFE-COATED J-CURVE

DIAMETER (inch)	REMARKS	LENGTH (cm)	FLEXIBLE END (cm)	J-RADIUS (mm)	CATALOGUE NUMBER
0.025		150	7	3	502-524
0.025		150	7	15	502-536
0.030	heavy duty, high strength	150	7	3	502-522
0.032		150	7	3	502-526
0.035		80	7	3	502-701
0.035		150	7	1.5	502-531
0.035	high strength	175	7	1.5	502-534
0.035		125	7	2	502-519
0.035		150	7	3	502-521
0.035		175	7	3	502-585
0.035		150	7	6	502-589
0.035		150	7	15	502-535
0.038		150	7	1.5	502-532
0.038	high strength	175	7	1.5	502-533
0.038		150	7	3	502-520
0.038		175	7	3	502-584
0.038		150	7	6	502-588
0.038		150	7	15	502-525

- For use in percutaneous entry, guidance and exchange of angiographic catheters
- Units per Package: 5

PTFE-COATED STRAIGHT TIP

DIAMETER (inch)	LENGTH (cm)	FLEXIBLE END (cm)	J-RADIUS (mm)	CATALOGUE NUMBER
0.032	260	7		502-554
0.035	220	7		502-558
0.035	260	7		502-555
0.038	220	7		502-557
0.038	260	7		502-553

PTFE-COATED J-CURVE

DIAMETER (inch)	LENGTH (cm)	FLEXIBLE END (cm)	J-RADIUS (mm)	CATALOGUE NUMBER
0.018	260	7	3	502-456
0.025	260	7	3	502-452
0.032	260	7	3	502-454
0.035	260	7	3	502-455
0.038	260	7	3	502-453

Diagnostic Guidewires

EMERALD™ Movable-Core Guidewires

- For use in percutaneous entry and guidance of angiographic catheters
- With 4 cm handle
- Units per Package: 5
- Amplatz movable core guidewires in the same configurations as below are available on request

PTFE-COATED STRAIGHT TIP

DIAMETER (inch)	LENGTH (cm)	FLEXIBLE END (cm)	J-RADIUS (mm)	CATALOGUE NUMBER
0.035	150			502-581
0.038	150			502-580

PTFE-COATED J-CURVE

DIAMETER (inch)	LENGTH (cm)	FLEXIBLE END (cm)	J-RADIUS (mm)	CATALOGUE NUMBER
0.032	150		3	502-572
0.035	150		3	502-571
0.038	150		3	502-570

EMERALD™ Amplatz

- For percutaneous entry and guidance of angiographic catheters
- Units per Package: 5

PTFE-COATED STRAIGHT TIP

DIAMETER (inch)	LENGTH (cm)	FLEXIBLE END (cm)	J-RADIUS (mm)	CATALOGUE NUMBER
0.035	150			502-581A

PTFE-COATED J-CURVE

DIAMETER (inch)	LENGTH (cm)	FLEXIBLE END (cm)	J-RADIUS (mm)	CATALOGUE NUMBER
0.038	150		3	502-570A
0.035	150		3	502-571A

EMERALD™ Amplatz Super Stiff

- For percutaneous entry and guidance of angiographic catheters
- Units per Package: 5

PTFE-COATED STRAIGHT TIP

DIAMETER (inch)	LENGTH (cm)	FLEXIBLE END (cm)	J-RADIUS (mm)	CATALOGUE NUMBER
0.035	260		3	502442E

Catheter Sheath Introducers

AVANTI®+ Standard Sheath Introducer

AVANTI®+ STANDARD SHEATH INTRODUCER

- Sheath assembly
- Flexible and kink-resistant cannula
- Sideport extension with 3-way stopcock
- Flexible dilator
- Units per Package: 5

FRENCH SIZE (F)	CANNULA USABLE LENGTH (cm)	MINI-GUIDEWIRE DIAMETER (inch)	WITH MINI-GUIDEWIRE	WITHOUT MINI-GUIDEWIRE
4F	11	.035	504-604X	504-604A
5F	11	.038	504-605X	504-605A
5.5F	11	.038	504-655X*	
6F	11	.038	504-606X	504-606A
6.5F	11	.038	504-656X*	504-656A*
7F	11	.038	504-607X	504-607A
7.5F	11	.038	504-657X*	
8F	11	.038	504-608X	504-608A
8.5F	11	.038	504-658X*	
9F	11	.038	504-609X	504-609A
10F	11	.038	504-610X	504-610A
11F	11	.038	504-611X	504-611A

* Monitoring sheath: provides slightly larger ID for pressure monitoring or side port aspiration with a catheter in place; they are one-half French size larger in size

AVANTI®+ Mid-Length Sheath Introducer

AVANTI®+ MID-LENGTH SHEATH INTRODUCER

FRENCH SIZE (F)	CANNULA USABLE LENGTH (cm)	DILATOR USABLE LENGTH (cm)	WITH OBTURATOR	WITHOUT OBTURATOR
4F	23	30		504-604T
5F	23	30		504-605T
6F	23	30	504-606D	504-606T
6.5F	23	30		504-656T*
7F	23	30	504-607D	504-607T
8F	23	30	504-608D	504-608T
9F	23	30	504-609D	504-609T
10F	23	30		504-610T
11F	23	30		504-611T

* Monitoring sheath: provides slightly larger ID for pressure monitoring or side port aspiration with a catheter in place; they are one-half French size larger in size

AVANTI®+ Valveless Sheath Introducer

AVANTI®+ VALVELESS PORTLESS SHEATH INTRODUCER WITH MINI-GUIDEWIRE

- Valveless-Portless
- Sheath assembly with female Luer connector hub, 45 cm miniguide wire and tapered vessel dilator
- 11 cm usable cannula length
- 17 cm usable guidewire length
- Straight
- Units per Package: 5

FRENCH SIZE (F)	CANNULA USABLE LENGTH (cm)	MINI-GUIDEWIRE DIAMETER (inch)	CATALOGUE NUMBER
6F	11	.038	504-606V
7F	11	.038	504-607V
8F	11	.038	504-608V

Catheter Sheath Introducers

AVANTI®+ Brachial Sheath Introducer

AVANTI®+ BRACHIAL SHEATH INTRODUCER WITH MINI-GUIDEWIRE

FRENCH SIZE (F)	CANNULA USABLE LENGTH (cm)	MINI-GUIDEWIRE DIAMETER (inch)	CATALOGUE NUMBER
4F	5.5	.035	504-604P
5F	5.5	.038	504-605P
6F	5.5	.038	504-606P

AVANTI®+ Paediatric Sheath Introducer

AVANTI®+ PAEDIATRIC SHEATH INTRODUCER WITH MINI-GUIDEWIRE

FRENCH SIZE (F)	CANNULA USABLE LENGTH (cm)	MINI-GUIDEWIRE DIAMETER (inch)	CATALOGUE NUMBER
4F	7.5	.021	504-604S
5F	7.5	.021	504-605S
6F	7.5	.021	504-606S

AVANTI®+ Transradial Sheath Introducer Kit

AVANTI®+ TRANSRADIAL SHEATH INTRODUCER KIT WITH MINI-GUIDEWIRE

- With mini-guidewire, vessel dilator and 21G needle

FRENCH SIZE (F)	CANNULA USABLE LENGTH (cm)	GUIDEWIRE ACCEPTANCE (")	CATALOGUE NUMBER
4F	11	.021	504-614Z
4F	23	.021 70 cm	504-624Z
5F	11	.021	504-615Z
5F	23	.021 70 cm	504-625Z
6F	11	.021	504-616Z
6F	23	.021 70 cm	504-626Z
7F	11	.021	504-617Z

Diagnostic Catheters

Left Coronary Techniques



LEFT CORONARY JUDKINS TECHNIQUE (100 cm)

- For percutaneous entry and guidance of angiographic catheters
- Units per Package: 5

		4F Quick Care Infiniti®	5F Infiniti®	5.2F SuperTorque® Plus	6F Infiniti®	6F SuperTorque® Plus	7F High Flow™
JL 3.5	Judkins Left 3.5	538-418	534-518T	533-551	534-618T	533-618	527-718
JL 4	Judkins Left 4	538-420	534-520T	533-553	534-620T	533-620	527-720
JL 4	Judkins Left 4 (125cm)				534-614T		
JL 4.5	Judkins Left 4.5	538-417	534-517T	533-527	534-617T	533-627	
JL 5	Judkins Left 5	538-422	534-522T	533-559	534-622T	533-622	527-722
JL 6	Judkins Left 6	538-424	534-524T	533-561	534-624T	533-624	527-724

LEFT CORONARY AMPLATZ TECHNIQUE (100 cm)

		4F Quick Care Infiniti®	5F Infiniti®	5.2F SuperTorque® Plus	6F SuperTorque® Plus	6F Infiniti®	7F High Flow™
AL I	Amplatz Left I	538-445	534-545T	533-540	533-645	534-645T	527-740
AL II	Amplatz Left II	538-446	534-546T	533-542	533-646	534-646T	527-741
AL III	Amplatz Left III	538-447	534-547T	533-544	533-647	534-647T	

Right Coronary Techniques



RIGHT CORONARY JUDKINS TECHNIQUE (100 cm)

		4F Quick Care Infiniti®	5F Infiniti®	5.2F SuperTorque® Plus	6F SuperTorque® Plus	6F Infiniti®	7F High Flow™
JR 3.5	Judkins Right 3.5	538-419	534-519T	533-550	533-619	534-619T	527-719
JR 4	Judkins Right 4	538-421	534-521T	533-552	533-621	534-621T	527-721
JR 5	Judkins Right 5	538-423	534-523T	533-558	533-623	534-623T	527-723
JR 4 RECESSED BRAID	Judkins Right 4 Recessed Braiding				533-689		
JR 4 MOD	Judkins Right 4 Modified	538-428	534-528T	533-528	533-628	534-628T	
JR 4 SHT	Judkins Right 4 Short Tip	538-427	534-527T	533-563	533-626	534-627T	
JR 5 RECESSED BRAID	Judkins Right 5 Recessed Braiding						
JR 5 MOD	Judkins Right 5 Modified					534-629T	
JR 6	Judkins Right 6	538-425	534-525T	533-560	533-625	534-625T	
JR 4 (125 cm)	Judkins Right 4 (125 cm)			533-565		534-615T	

RIGHT CORONARY AMPLATZ TECHNIQUE MODIFIED (100 cm)

		4F Quick Care Infiniti®	5F Infiniti®	5.2F SuperTorque® Plus	6F SuperTorque® Plus	6F Infiniti®	7F High Flow™
AR MOD	Amplatz Right Modified	538-448	534-548T	533-554	533-648	534-648T	527-748
AR I MOD	Amplatz Right 1 Modified	538-441	534-541T		533-641	534-641T	
AR II MOD	Amplatz Right 2 Modified	538-443	534-543T		533-643	534-643T	

Diagnostic Catheters

Right Coronary Techniques



RIGHT CORONARY EXTRA BACK-UP SHAPES - WILLIAMS TECHNIQUE

		4F Quick Care Infiniti®	5F Infiniti®	5.2F SuperTorque® Plus	6F SuperTorque® Plus	6F Infiniti®	7F High Flow™
3D RC	Right Coronary 3 imensional	538-476	534-576T	533-576	533-676	534-676T	

RIGHT CORONARY NOTO TECHNIQUE (100 cm)

		4F Quick Care Infiniti®	5F Infiniti®	5.2F SuperTorque® Plus	6F Infiniti®	6F SuperTorque® Plus	7F High Flow™
SRC	Right Coronary N.	538-474	534-574T		534-674T		

Multipurpose Technique



MULTIPURPOSE A COURNAND TECHNIQUE (OPEN END, NO SIDES HOLES)

		4F Quick Care Infiniti®	5F Infiniti®	5.2F SuperTorque® Plus	6F SuperTorque® Plus	6F Infiniti®	7F High Flow™
MPA 1	Multipurpose A Cournand, 100 cm			533-578	533-640		527-784
MPA 1	Multipurpose A, 125 cm				533-667		527-733
MPA 1	Multipurpose A, 80 cm			533-579	533-633		

MULTIPURPOSE A PAEDIATRIC CURVE (OPEN END, 2 SIDE HOLES)

		4F Quick Care Infiniti®	5F Infiniti®	5.2F SuperTorque® Plus	6F SuperTorque® Plus	6F Infiniti®	7F High Flow™
MPA 2 (I)	Multipurpose A-2, 100 cm 2 side holes	538-442		533-556			
MPA 2 (I)	Multipurpose A-2, 125 cm 2 side holes	538-444		533-557			
MPA 2 (I)	Multipurpose A-2, 65 cm 2 side holes	538-440	534-540T				
MPA 2 (I)	Multipurpose A-2, 80 cm 2 side holes	538-449	534-549T				

MULTIPURPOSE A ADULT CURVE (OPEN END, 2 SIDE HOLES)

		4F Quick Care Infiniti®	5F Infiniti®	5.2F SuperTorque® Plus	6F SuperTorque® Plus	6F Infiniti®	7F High Flow™
MPA 2	Multipurpose A-2, 100 cm		534-542T	533-582	533-642	534-642T	527-742
MPA 2	Multipurpose A-2, 125 cm		534-544T	533-587	533-644	534-644T	527-787
MPA 2	Multipurpose A-2, 80 cm			533-532	533-629		
MPA 2	Multipurpose A-2, 65 cm			533-562			

MULTIPURPOSE B (OPEN END, 2 SIDE HOLES, 100 cm)

		4F Quick Care Infiniti®	5F Infiniti®	5.2F SuperTorque® Plus	6F SuperTorque® Plus	6F Infiniti®	7F High Flow™
MPB 2	Multipurpose B-2		534-539T		533-649	534-649T	

Diagnostic Catheters

Multipurpose Technique



MULTIPURPOSE B GENSINI TECHNIQUE (OPEN END, 6 SIDE HOLES, 100 cm)

		4F Quick Care Infiniti®	5F Infiniti®	5.2F SuperTorque® Plus	6F SuperTorque® Plus	6F Infiniti®	7F High Flow™
MPB 3	Multipurpose B Gensini				533-634		

Radials / Brachials Technique

SONES TECHNIQUE

		4F Quick Care Infiniti®	5F Infiniti®	5.2F SuperTorque® Plus	6F SuperTorque® Plus	6F Infiniti®	7F High Flow™
SON II	Sones II, 80 cm			533-531			
SON I	Sones I, 100 cm		534-562T		533-630	534-635T	
SON I.5	Sones I.5, 100 cm		534-564T				
SON II	Sones II, 100 cm				533-631	534-637T	
SON III	Sones III, 100 cm				533-632		
SON I	Sones I, 80 cm 2 side holes		534-530T				
SON II	Sones II, 80 cm 2 side holes		534-531T				

CASTILLO TECHNIQUE (80 cm)

		4F Quick Care Infiniti®	5F Infiniti®	5.2F SuperTorque® Plus	6F SuperTorque® Plus	6F Infiniti®	7F High Flow™
CAS II	Castillo II, 80 cm				533-682		
CAS I	Castillo I, 100 cm			533-584	533-684		
CAS II	Castillo II, 100 cm			533-585	533-685		
CAS III	Castillo III, 100 cm				533-686		

BARBEAU TECHNIQUE

		4F Quick Care Infiniti®	5F Infiniti®	5.2F SuperTorque® Plus	6F SuperTorque® Plus	6F Infiniti®	7F High Flow™
BARBEAU	Barbeau, 100 cm, 2 side holes		534-578T			534-615T	527-786
BARBEAU	Barbeau, 125 cm, 2 side holes					534-614T	

Diagnostic Catheters

Bypass



EL GAMAL TECHNIQUE (100 cm)

		4F Quick Care Infiniti®	5F Infiniti®	5.2F SuperTorque® Plus	6F SuperTorque® Plus	6F Infiniti®	7F High Flow™
EGB I	El Gamal I				533-637		
EGB II	El Gamal II				533-638		

CORONARY BYPASS TECHNIQUES (100 cm)

		4F Quick Care Infiniti®	5F Infiniti®	5.2F SuperTorque® Plus	6F SuperTorque® Plus	6F Infiniti®	7F High Flow™
LCB	Left Coronary Bypass	538-472	534-572T	533-572	533-672	534-672T	527-772
RCB	Right Coronary Bypass	538-470	534-570T	533-570	533-670	534-670T	527-770
IM	Internal Mammary	538-460	534-560T	533-580	533-660	534-660T	527-760

Ventricular & Cardiac Catheters



VENTRICULAR STRAIGHT PIGTAIL (110 cm)

		4F Quick Care Infiniti®	5F Infiniti®	5.2F SuperTorque® Plus	6F SuperTorque® Plus	6F Infiniti®	7F High Flow™
PIG	Straight Pigtail 4 side holes				533-650F		
PIG	Straight Pigtail 5 side holes	538-451V					
PIG	Straight Pigtail 6 side holes	538-450S*	534-550S	533-533	533-650S	534-650S	527-750S
PIG	Straight Pigtail 8 side holes	538-450E*	534-550E		533-650E	534-650E	527-750E
PIG	Straight Pigtail 12 side holes						527-750

* Micro Loop

VENTRICULAR ANGLED PIGTAIL: VAN TASSEL TECHNIQUE (110 cm)

		4F Quick Care Infiniti®	5F Infiniti®	5.2F SuperTorque® Plus	6F SuperTorque® Plus	6F Infiniti®	7F High Flow™
PIG	Angled Pigtail 145° 5 side holes Modified	538-457V					
PIG	Angled Pigtail 145° 6 side holes		534-552S	533-534A	533-652S	534-652S	527-752S
PIG	Angled Pigtail 145° 6 side holes Modified	538-453S*	534-553S	533-537S	533-653S		
PIG	Angled Pigtail 155° 5 side holes Modified	538-459V	534-555S				
PIG	Angled Pigtail 155° 6 side holes		534-554S	533-533A	533-654S	534-654S	
PIG	Angled Pigtail 155° 6 side holes Modified	538-455S*			533-655S		
PIG	Angled Pigtail 145° 12 side holes						
PIG	Angled Pigtail 155° 12 side holes						527-754

* Micro Loop

Diagnostic Catheters

Ventricular & Cardiac Catheters

N.I.H. PAEDIATRIC CURVE

		4F	5F	5.2F	6F	6F	7F
		Quick Care Infiniti®	Infiniti®	SuperTorque® Plus	SuperTorque® Plus	Infiniti®	High Flow™
N.I.H.	N.I.H. 65 cm			533-525			
N.I.H.	N.I.H. 80 cm			533-535			
N.I.H.	N.I.H. 100 cm			533-545			

N.I.H. ADULT CURVE

		4F	5F	5.2F	6F	6F	7F
		Quick Care Infiniti®	Infiniti®	SuperTorque® Plus	SuperTorque® Plus	Infiniti®	High Flow™
N.I.H.	N.I.H. 80 cm				533-635		
N.I.H.	N.I.H. 100 cm				533-636		527-745

Diagnostic Catheters



Diagnostic Multipacs

4F	5F	5.2F	6F	6F
Quick Care Infiniti®	Infiniti®	SuperTorque® Plus	SuperTorque® Plus	Infiniti®
538-493	CP0066	533-593	533-693	CP0008
538-494	CP0088	533-598	533-698	CP0210
538-498	CP0152		CP0038	CP0257
538-499	CP0157		CP0175	
CP0092	CP0171			
CP0097	CP0174			
CP0125	CP0179			
CP0221	CP0203			
	CP0207			
	CP0208			
	CP0250			

Diagnostic Primopacs

4F	5F	5.2F	6F	6F
Quick Care Infiniti®	Infiniti®	SuperTorque® Plus	SuperTorque® Plus	Infiniti®
538-491P		533-591P	533-691P	
538-493P		533-593P	533-693P	
538-494P		CP0018		
538-499P		CP0027		
CP0156				
CP0242				
CP0243				
CP0248				

Diagnostic Corpacs

4F	5F	5.2F	6F	6F
Quick Care Infiniti®	Infiniti®	SuperTorque® Plus	SuperTorque® Plus	Infiniti®
	533-591C			
	533-592C			
	533-593C			
	533-594C			
	533-691C			
	533-692C			
	533-693C			
	533-694C			
	CP0031			

Diagnostic Corpacs

4F	5F	5.2F	6F	6F
Quick Care Infiniti®	Infiniti®	SuperTorque® Plus	SuperTorque® Plus	Infiniti®
	CP0032			
	CP0035			
	CP0048			
	CP0082			
	CP0094			
	CP0164			
	CP0165			
	CP0213			
	CP0230			
	CP0245			
	CP0247			

Diagnostic Catheters



Diagnostic Propacs

4F	5F	5.2F	6F	6F
Quick Care Infiniti®	Infiniti®	SuperTorque® Plus	SuperTorque® Plus	Infiniti®
538-492C				
538-493C				
538-494C				
538-499C				

Important Information:

Prior to use, refer to the "instructions for use" supplied with these devices for indications, contraindications, side effects, suggested procedure, warnings and precautions. As part of the Cordis policy of continuous product development we reserve the right to change product specifications without prior notification.

Tel:+32 2 352 14 11 Fax:+32 2 352 15 90

© Cordis Europe, a division of Johnson & Johnson Medical N.V. - December 2010 - 2E-800-1973-1